



COVERAGE
All Year Round



WeatherTech®



WHOLESALE
Catalog



MADE IN THE USA

WeatherTech® ensures our customers have the highest quality products as well as the systems necessary to continually exceed expectations in every regard.

What Matters to you?

Today, America needs fresh leadership to lead us as a nation out of this economic crisis. Leadership must come not only from our political leaders but also from the average citizen. The exporting of American jobs is a trend that must be stopped and reversed. When I walk into my local hardware store, I typically find 85% of the goods for sale are manufactured 7,000 miles away. Recognizable American brands have been forced by shortsighted management and buyers at large national chains to build factories overseas just to save a lousy \$.50 on a tape measure. To these ruthless buyers, it is all about the money. Rarely are product quality, the political system, human rights, animal rights and environmental costs to the planet considered, not to mention the cost to our society of exporting not only jobs, but an entire factory!

At MacNeil Automotive, we are doing our part for the American economy and for our 300 million fellow citizens and neighbors. My philosophy is that if my neighbor doesn't have a job, sooner or later I won't have a job either. For example, we used to have our All-Weather Floor Mats manufactured in England by a company that used antiquated, inefficient equipment. They made a decent floor mat for us, but we thought we could build a better floor mat for our customers using modern American technology, American raw materials and skilled American workers. So in 2007 we transferred all of our floor mat manufacturing back to the United States. Today, we build the best fitting, highest quality automotive floor mats in the world, right here in America.

Our machine shop is equipped with 30 CNC machining centers including four 4 axis mills and two 5 axis mill that produce between 30 to 50 injection and thermoforming molds per month. We have one shift of highly skilled American Journeymen, toolmakers and apprentices, but our machines run 24 hours a day, 7 days a week. There is not a more efficient tool and mold making operation in the world - and guess what, it's right here in America.

Furthermore, most of our CNC mills are manufactured in Oxnard, CA by Haas. Our 1,000 ton injection molding machines are made in Bolton, Ontario of American and

Canadian components. Our thermoforming machinery is made in Carol Stream, IL. The raw steel and aluminum billets which make up our tooling are sourced from American steel aluminum mills such as Vista Metals in Fontana, CA. The raw materials that make up our All-Weather Floor Mats, FloorLiners, Cargo Liners and MudFlaps are manufactured in Paulding, OH; Greenville, OH; Wichita, KS; and Jasper, TN. Our forklifts are made in Columbus, IN and Greene, NY. Our warehouse racking is manufactured in Melrose Park, IL.

At MacNeil Automotive, we are also very aware of sustainability and our responsibility to the environment. We are proactive in controlling waste and recycling all of the unused raw materials from the manufacture of our tooling and products including: aluminum, steel, rubber, TPO, TPE, paper and cardboard.

As you can see, we are as for our consumer and OEM clients as we are passionate about supporting the American economy, preserving the American industrial infrastructure, and keeping the "money" in our family, a family of 300 plus million people from all over America.

Our commitment and dedication to our customer is further exemplified by our certification to ISO 9001:2008 Quality Management Standards with the additional Automotive Qualification ISO/TS 16949:2009. This ensures our customers of the highest quality products as well as the systems necessary to continually exceed expectations in every regard.

Life is simple; be good to your fellow man, be kind to animals and the environment, and place building a quality product, supporting your country and your fellow American worker before profit. And, one last thing - let's all do our best to balance family time with work time as our children are the future of America.

Sincerely,



David MacNeil, Founder/CEO

Contents

FloorLiner™	6
3D FloorMat NEW	8
All-Weather Floor Mat	10
AVM® All-Vehicle Mat	12
AVM® HD™	14
Cargo/Trunk Liner	16
Bumper Protector	18
AVM® Universal Cargo Mat	20
Under Seat Storage System NEW	22
SunShade	24
Seat Protector	26
Seat Back Protector	28
Door Protector NEW	29
Interior Protection Packaging	30
TechLiner® and Tailgate TechLiner®	32
UnderLiner®	34
Roll Up Truck Bed Cover	36
AlloyCover™	38
No-Drill MudFlaps	40
Side Window Deflectors	42
Stone & Bug Deflector	44
Hood Protector	46
Sunroof Wind Deflector	48
LampGard®	49
ScratchProtection NEW	50
License Plate Frames NEW	52
BumpStep®	54
BumpStep®XL	55
Billet BumpStep®	56
Billet BumpStep®XL NEW	57
Exterior Protection Packaging	58





Ready-to-Wash™ Bucket System	60
TechCare® Auto Detailing & Cleaning	62
WaterBlade	63
Soaker™	63
Microfiber Applicator & Cloths	63
Wash Mitt	63
WeatherTech® BatteryCharger	64
Custom-Fit Car Covers	65
Vehicle Care Packaging	66
OutdoorMat™	68
IndoorMat™	70
BootTray™	72
SinkMat™	73
Coasters	74
Christmas Tree Mat	75
TechFloor™	76
Home & Business Packaging	78
PetComfort®	80
Pet Barrier	82
PetRamp	84
CargoTech®	86
RackSack®	88
CarCoasters™	90
CupFone™ NEW	91
PurseTray™ NEW	92
StarBelt® Collection Clothing Belts	94
Gift Bag	94
Marketing Materials Order Form	95

Extreme Duty Floor Protection

- Provides “absolute interior protection™”
- Has channels to carry fluids and debris to a lower reservoir
- Material provides soft touch top, rigid core strength and bottom surface friction

Colors

Black, Tan and Grey; Cocoa for Select Applications



FloorLiners™ for Select Vinyl Applications Now Available!



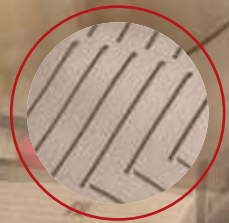
Front FloorLiner™



Front Over-the-Hump FloorLiner™



Textured Finish



Contoured Underside



Raised Lip



Rear Over-the-Hump FloorLiner™



Rear FloorLiner™

3D FloorMat

Optional
Trim Line for
Sill Plate
(if applicable)



Anti-Skid
Nibs

Ridges
Provide
Additional
Stability



Three Dimensions of Vehicle Protection

- Precise fit to the make and model of your vehicle
- Flexible, yet extremely durable – made of advanced rubber-like thermoplastic elastomer (TPE)
- 100% recyclable and virtually odorless material
- Specially designed channels carry fluids and debris to a lower area away from your shoes
- Raised outer edges to protect the front, back and sides of your vehicle's footwell
- Stay in place with the help of underside anti-skid ridges and nibs
- Specially designed retention systems work with existing hardware to keep in place

Colors

Black, Tan and Grey; Cocoa for Select Applications



All-Weather Floor Mat

Interior Floor Protection

- Deeply sculpted channels designed to trap water, road salt, mud and sand
- Will not crack, curl or harden regardless of temperature
- Environmentally safe, 100% recyclable nontoxic material
- Available for virtually any car, SUV, minivan or light truck

Colors

Black, Tan and Grey; Cocoa for Select Applications



Front All-Weather Floor Mat



Rear All-Weather Floor Mat





AVM® All-Vehicle Mat

Advanced Universal Trim-to-Fit™ Mat

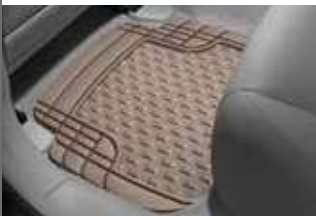
- Engineered to fit virtually all vehicles
- Unique left & right designs
- Won't crack, curl or harden in sub-zero weather
- Patented MatGrip® or TechGrip® II included to prevent shifting
- No harmful PVCs
- Available for virtually any car, SUV, minivan or light truck

Colors

Black, Tan and Grey



Front AVM® Left Hand Drive



AVM® Rear



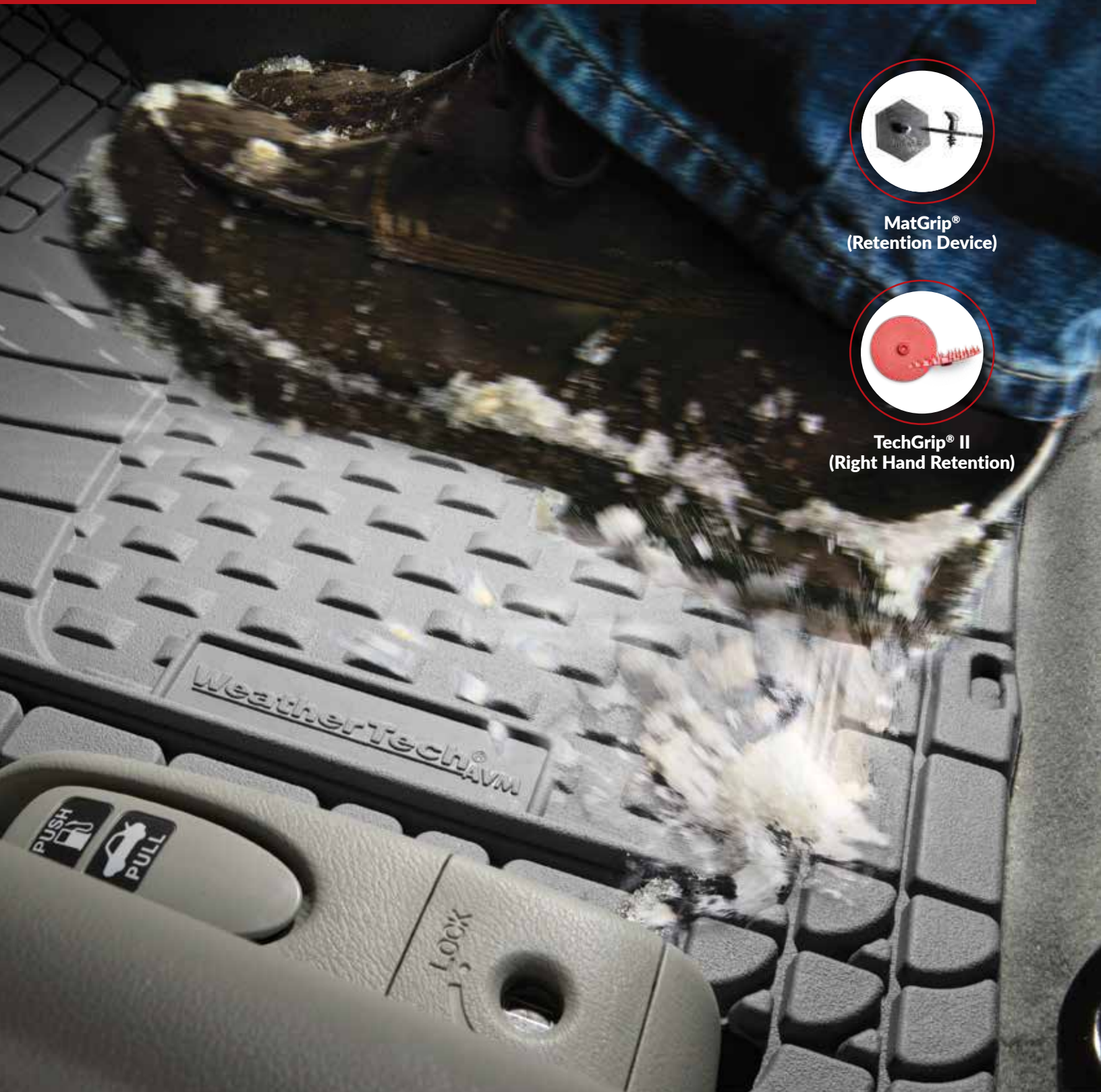
AVM® Over-the-Hump Rear



MatGrip®
(Retention Device)



TechGrip® II
(Right Hand Retention)



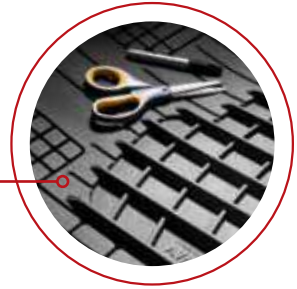
AVM® HD™ Rear



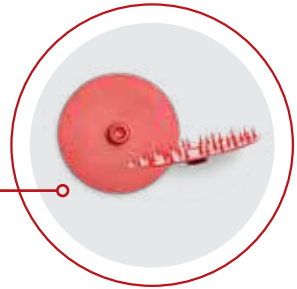
Heavy Duty Semi-Universal Trim-to-Fit™ Mats

- Engineered to fit virtually all vehicles
- Unique left & right designs
- Advanced heavy-duty design
- Won't crack, curl or harden in sub-zero weather
- Patented TechGrip® II included to prevent shifting
- No harmful cadmium, lead or PVC
- Available in black

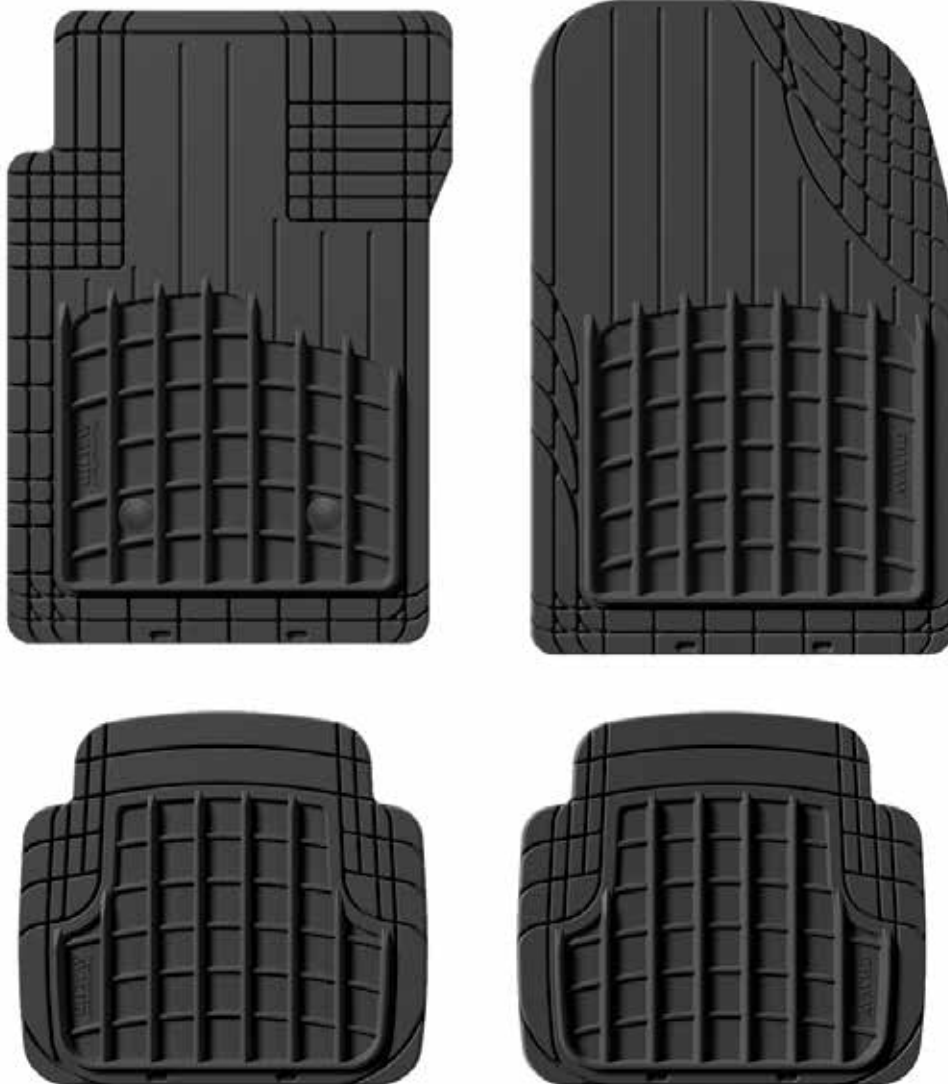
Semi-Universal Trim



TechGrip® II Prevents shifting



Left Hand Drive with Rear Set



Cargo/Trunk Liner



Custom Cargo Area Protection

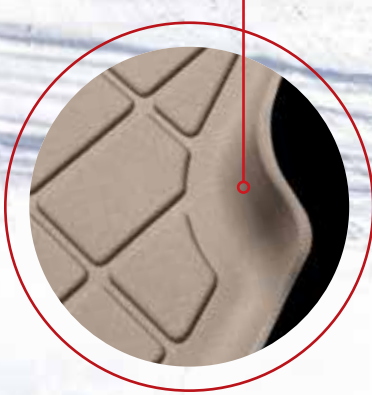
- Complete trunk and cargo area protection
- Digitally designed for each application
- Remains flexible under temperature extremes
- Available for car trunks, SUVs and minivans

Colors

Black, Tan and Grey; Cocoa for Select Applications



**Raised Lip
and Textured
Finish**



Bumper Protector





Quick and Easy Bumper Protection

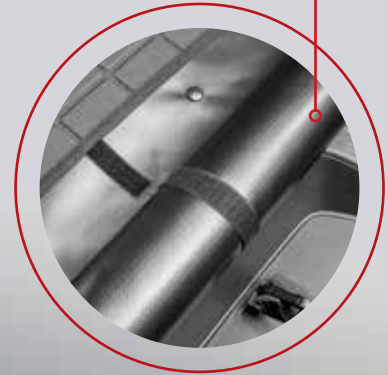
- Attaches to the Cargo Liner by 4 pre-installed snaps
- Rolls up neatly for easy storage
- Available for select applications, purchase of Cargo Liner required



Four Easy Snaps



Rolls Up Neatly



AVM® Universal Cargo Mat



Trim-To-Fit™
 Length from 27½"- 36"
 Width from 41"- 53"



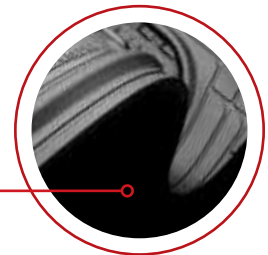
Universal Cargo Area Protection

- Intelligent design combined with trim lines, allow for a truly custom fit
- An outer ridge and inner reservoir contain and keep fluid away from vehicle's interior
- Soft, flexible rubber compound

Colors
 Black, Tan and Grey



Flexible



Tall Outer Ridge



Under Seat Storage System

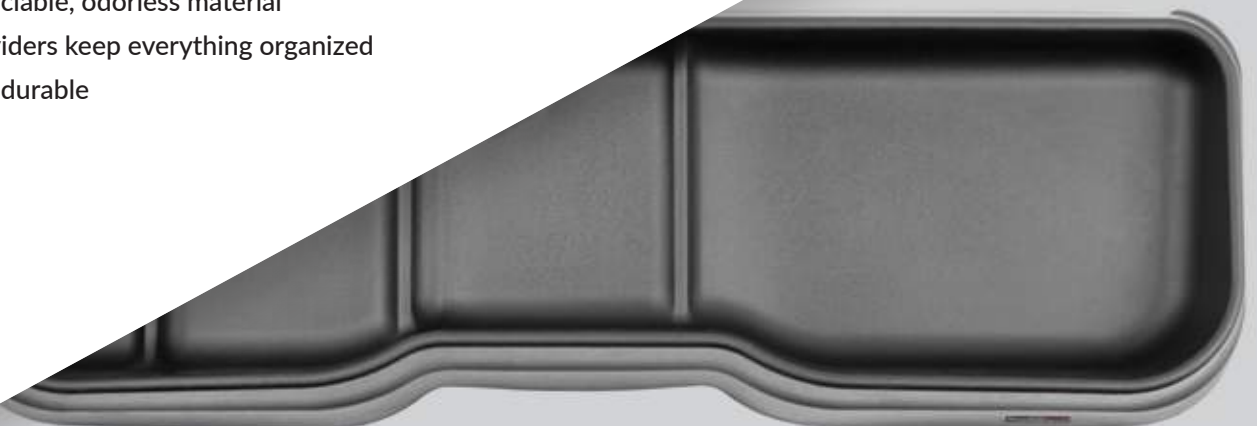


Under Seat Storage System Packaging



Under Seat Storage System

- Easiest to install pickup truck storage - PERIOD!
- Fits to the exact contours of application
- No tools or drilling required
- Installs with easy-to-use strap
- 100% recyclable, odorless material
- Built in dividers keep everything organized
- Extremely durable





SunShade

Keep the Sun and Heat Out

- Developed with a foam core center for a sturdy fit
- Will remain snug in the windows until removed
- Easily removed with the pull of a tab
- Pieces roll together and secure with a hook & loop strap for easy storage



Reverse Side Shown



Reflective Side Shown

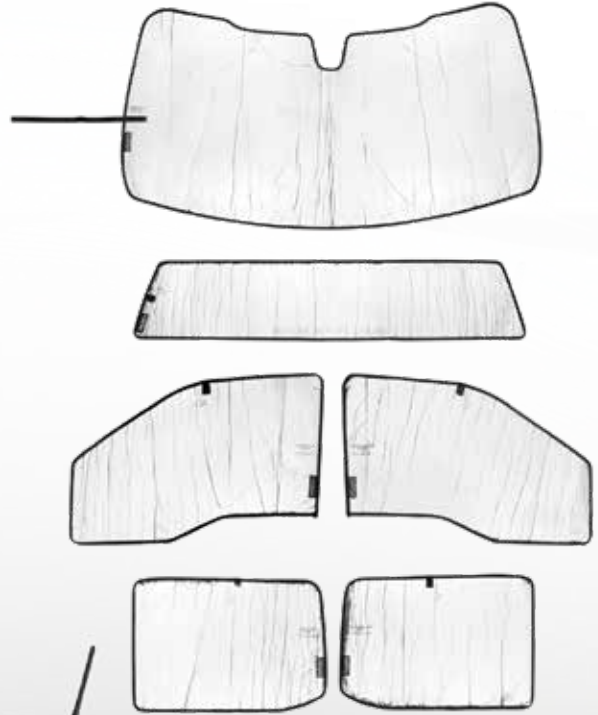
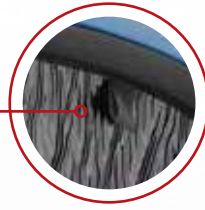


**SunShade Storage Bag
(sold separately)**



Custom-Fit Full Vehicle Kits

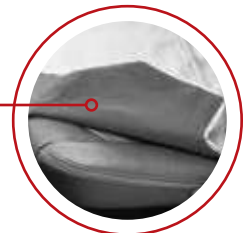
Custom-fit parts stay put and snug, pull tabs for easy removal



Seat Protector



Non-Slip
Cover





Seat Protection

- Excellent bucket or bench vehicle seating protection
- Prevents scratches, damage or spills from ruining seats
- Made from a polycotton drill fabric that features a durable water-repellent finish
- Engineered with an extra layer of nylon lining for extra protection
- Quick and easy installation and machine washable

Colors

Black, Tan, Grey and Cocoa



Bench Seat Protector



Bucket Seat Protector



Seat Back Protector

- Fits most cars, SUVs, minivans and trucks
- Size: 18½" x 23½"
- Easy to clean with a wipe cloth – also machine washable
- Water-resistant fabric
- Durable, water-resistant poly cotton twill fabric

Colors

Black, Tan, Grey and Cocoa



Size
18½" x 23½"



Door Protector

- Protects doors from scuffs, cuts and dirt
- Great for window loving pets
- Durable, water-resistant polycotton twill fabric
- Just wipe with a cloth to clean, machine washable
- Sold as a pair

Colors

Black, Tan, Grey and Cocoa



Packaging

A	FLOORLINER™
B	ALL-WEATHER FLOOR MATS
C	AVM® ALL-VEHICLE MATS
D	AVM® HD™ MATS
E	CARGO LINERS
F	AVM® UNIVERSAL CARGO MAT
G	SEAT PROTECTOR
H	SEAT PROTECTOR FOR BUCKET SEATS
I	SEAT BACK PROTECTOR





A

E

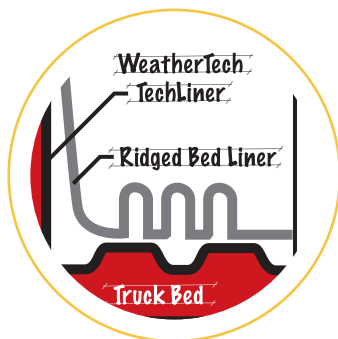
B

D

TechLiner® & Tailgate TechLiner®

Easiest to Install Pickup Bed Protection – PERIOD!

- Fits to the exact contours of each application
- No messy sprays or drilling required
- 100% recyclable, odorless material
- Flexible and durable
- Chemical and UV resistant



**Truck Bed
Cross Section**



Raised Lip



Tailgate TechLiner®





Truck Bed Protection

- For use under drop-in bed liners
- Protects the painted surface of the truck bed
- Fits to the exact contours
- Creates .065" thick semi-soft barrier under drop-in liner

For Use Under Drop-In Bed Liners





Roll Up Truck Bed Cover

Attractive, Low Profile Design Provides Sleek Addition to Your Truck

- Low profile design provides a sleek addition to the truck
- No cargo space lost, allows for 100% use of bed space whether open or closed
- Cargo protection keeps cargo secure and away from the elements when in use
- Easy to install & operate
- No need for drilling into the truck bed and opens in seconds



Easy Use



Sleek, Ultra Low Profile Design

- Strong, lightweight structure for maximum protection
- Sleek, aerodynamic design
- Strong aluminum panels with reinforced vinyl hinges
- Storage clips integrated onto cover
- Weathertight seal for cargo protection
- Easy one person operation

Quick Release
Open



Storage
Clips



Easy Use



No-Drill MudFlaps

Installs
Without
Wheel/Tire
Removal



QuickTurn™
Fastener



No-Drill Mudflap



Dually No-Drill Mudflap



Mounts-in-Minutes™

- Protects fender and rocker panel from stone chips, slush, dirt and debris
- Installs without tire/wheel removal
- No drilling into vehicle's fragile metal surface
- Uses QuickTurn™ fastening system, OEM hardware or supplied hardware

Side Window Deflectors

Sleek, Low Profile Design

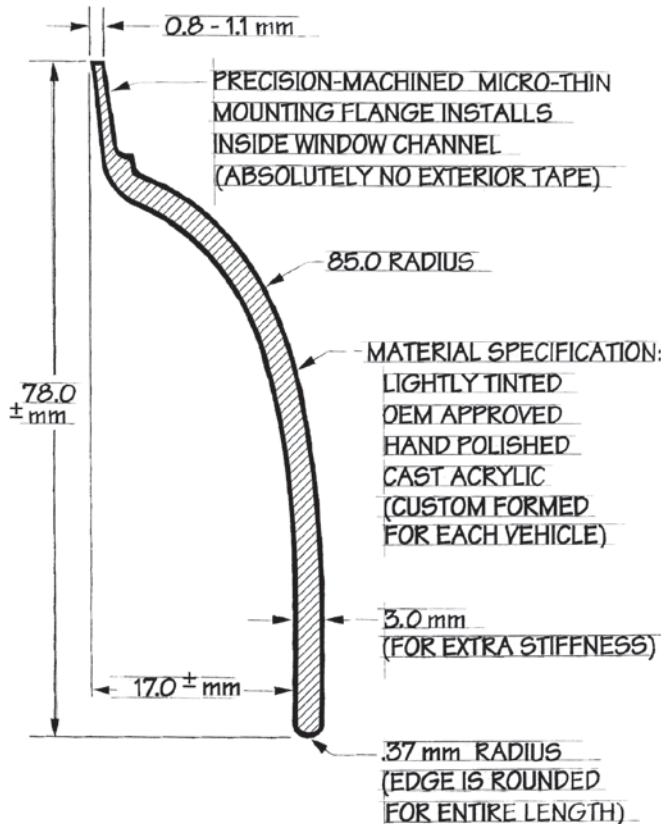
- “Let the fresh air in®” and keep the weather out
- Custom-fit in-channel design
- No exterior tape needed
- Low profile original equipment look



Light and Dark Tint



THE SECRET



Stone & Bug Deflector

Virtually Indestructible

- Excellent protection against stone chips and bug stains
- Installs with automotive adhesive tape or fasteners using existing holes; no drilling required
- Made from virtually indestructible aerospace-acrylic





Available in Dark Finish



Aerodynamic Design

Hood Protector



Custom
Molded

Custom-Fit Hood Protector

- Stylish, flush-mounted design
- Made from flexible, durable acrylic that flows with the contours of the hood
- Installs with 3M automotive grade tape
- Protection for the hood against damage to the paint
- Car wash safe





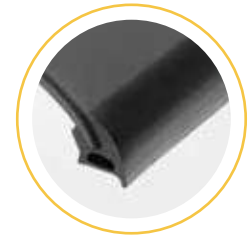
Sleek, Stylish - Aerodynamic Appearance

Wind Noise and Air Turbulence Reduction

- Reduces in-cabin wind noise and air turbulence
- Held securely in place with the MagiClip™ fastening system
- AirCushion™ gasket protects vehicles finish and seals deflector
- Sleek and sophisticated design for any vehicle with a sunroof



**MagiClip™
Fastening System**



**AirCushion™
Gasket**

Vehicle
Specific
Design





Peel & Stick
Directly to
the Surface

Custom
Die-Cut for
a Perfect
Fit

Headlight Protection

- Scratch resistant and self-healing
- High-performance 8 mil polyurethane film
- Protects costly vehicle headlamps, fog lamps, and turn indicator by preventing scratches and cracks from road debris
- Virtually invisible
- Easy to install

Custom Fit Protection Against Scratches and Premature Wear

- Protection against scratches and damage from keys, rings, rocks on the bottom of a shoe and more
- Made from a high-performance 8 mil polyurethane
- Virtually invisible film
- Custom measured for doorsills, door handle areas, door edge and top of rear bumper
- Manufactured to custom-fit exact make and model





License Plate Frames



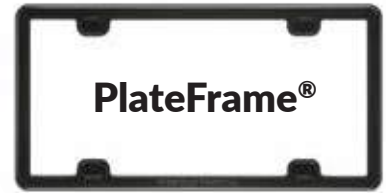
Clear License Plate Acrylic Lens Cover with Durable Frame that Protects License Plates

- Virtually indestructible
- Optimum protection from UV rays
- Available in 17 Colors



Clear, Durable One-Piece Frame that Protects License Plates

- Virtually indestructible clear license plate frame
- Optimum resistance to weathering
- Available in 17 colors



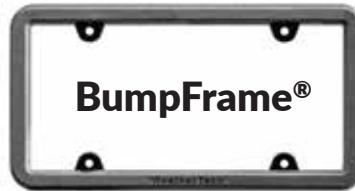
Solid Black Weather-Resistant Low Profile Protective License Plate Frame

- Virtually indestructible
- Optimum resistance to weathering
- Low profile design



Polished Stainless Steel License Plate Frame

- Solid, one-piece stainless steel frame
- PlateSpacer supports plate and frame away from car body



Heavy-Duty License Plate and Bumper Protector

- Impact-resistant design that works as bumper protector
- Virtually unbreakable composition



Heavy-Duty Solid Billet Aluminum Frame Protection

- Solid billet aluminum low-profile license plate frame
- Made from American-sourced raw materials
- Available in 2 colors



100% Solid Titanium Billet

- Limited quantities - only 18 made!
- High strength, corrosion and weather resistant
- Click and Stay screw caps
- Engaging statement piece for virtually any vehicle



3K Carbon Fiber 2x2 Twill Woven Prepreg License Plate Frame

- Ultra lightweight
- Sleek, modern, and clean look
- Simple to install

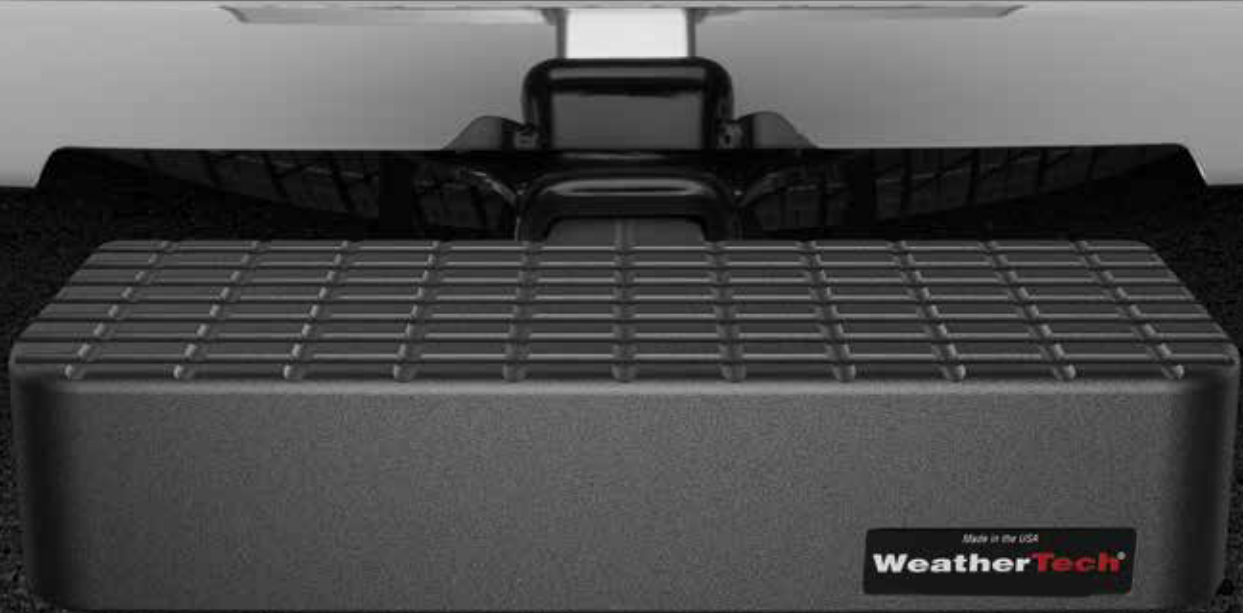


Motorcycle Billet Aluminum

- Solid billet aluminum low-profile license plate frame for motorcycles
- Made from American-sourced raw materials
- Available in 3 colors



Stainless Steel Hardware Included



Available Options



Theft Deterrent Stainless Hitch Pin

(sold separately)



Hitch Pin

(sold separately)

12" of Hitch Mounted Bumper Protection

- Fits standard 2" receiver hitch
- Creates a "step" for easy cargo access
- Molded from a patented composite resin
- Protection against bumps and scratches from minor accidents

Available in USA and Canadian Designs





Available Options



Zinc Plated Hardware



Theft-Deterrent Stainless Steel Hardware

24" of Hitch Mounted Bumper Protection

- Fits any standard 2" hitch receiver
- Molded from a strong interior material with the combination of a durable and flexible outer material
- Lessens the damage of minor accidents to the bumper area
- Can be used as a "step" to access the roof of vehicle
- Includes hardware to securely fasten in place

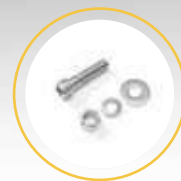




Theft Deterrent Stainless Hitch Pin
(included)

12" of Hitch Mounted Bumper Protection

- Solid aluminum, corrosion-resistant design
- Fits standard 2" receiver hitch
- Creates a "step" for easy cargo access
- Protection against bumps and scratches from minor accidents



**Theft-Deterrent
Stainless Steel
Hardware**
(included)



24" of Hitch Mounted Bumper Protection

- Solid aluminum, corrosion-resistant design
- Defends bumpers from rear end accidents, dents and scratches
- Creates a "step" for easy cargo access
- Measures 24" wide

Packaging



A	UNDERLINER®
B	TECHLINER®
C	TAILGATE TECHLINER®
D	NO-DRILL MUDFLAPS
E	SIDE WINDOW DEFLECTORS
F	STONE & BUG DEFLECTOR
G	HOOD PROTECTOR
H	LAMPGARD®
I	LICENSE PLATE FRAMES
J	BUMPSTEP®
K	BUMPSTEP®XL







Ready-to-Wash™ System

- Heavy duty bucket
- MittSaver™ wash mitt holder
- GritGrate™ insert
- Comfy vented lid seat
- Sturdy rolling dolly
- Easy roll casters with lock
- 100% USA made!

TECHCARE® COMPLETE LINE OF AUTOMOTIVE CARE AND CLEANING PRODUCTS

WeatherTech® TechCare® is a complete line of automotive care and cleaning products. Developed with dedication to sustainability and superior care, TechCare® products are made from only the highest quality of ingredients and advanced formulas. The TechCare® line of care products provide the ultimate clean and professional finish expected of the WeatherTech® name.



FloorLiner™ & FloorMat Cleaner

- Removes scuff marks and stains
- Lifts sand and dirt for easy removal
- Dissolves grease and oil stains



Interior Detailer

- Spray-on, wipe away formula removes dirt & dust
- Use on virtually all non-glass interior surface
- Helps to eliminate odors



Leather Conditioner with Aloe Vera

- Matte Finish
- Contains Aloe Vera for moisturizing and enhancing
- Guards against UVA and UVB
- Contains spot & stain blocker



Carpet Cleaner with SpotTech™

- Stain repellent and remover
- Contains wetting agent to loosen dirt and oil stains
- Enhances anti-staining properties



Interior Glass Cleaner with Anti-Fog

- Specifically for automotive interiors
- Prevents fogging from temperature variations
- Does not leave streaks or film



Acid-Free Wheel Cleaner

- Acid-free, biodegradable formula
- For virtually all wheel types
- Removes road grime and brake dust on contact



Heavy Duty Wheel Cleaner

- Acid-free formula for virtually all wheel types
- Quickly cleans extreme brake dust and grime buildup
- Changes to a red/purple color when working



FloorLiner™ & FloorMat Protector

- Helps to prevent staining
- Slip resistant finish
- Creates long-lasting, "Like New" appearance



Gentle Car™ Shampoo

- Non-corrosive
- Highly concentrated
- Safe for virtually all paint finishes
- Removes bugs, tar, grease and oil



Tire Gloss with Cross-Link Action™

- Promotes Cross-Link Action™ with rubber for a stronger bond
- High gloss appearance
- Easy, spray on and walk away



Wax-Prep Clay Gel Cleaner

- Pre-cleaner that preps surface for waxing
- Removes imbedded impurities in finish
- Provides a glossy & smooth finish



Carnauba Gel Wax

- Provides durable, high gloss finish
- Helps to remove minor blemishes
- For use on paint, chrome, or fiberglass
- Contains natural Carnauba wax



QuikTech™ Detailer with Carnauba Wax

- Easy on and off application
- Enhances appearance of automotive, motorcycle, watercraft and aircraft finishes
- Contains natural Carnauba wax



Exterior Glass Cleaner with Repel

- Non-streaking, ammonia-free
- Removes bugs, dirt and debris
- Adds water repellency



Soaker™

- Soaks up the water to quickly dry your vehicle without streaking
- Smooth surface on one side and textured on the other for different drying style needs
- Great use for cars, trucks, motorcycles, boats, planes, animals, household chores and more
- Approximately 17" x 27"
- Does not leave lint behind
- Machine washable



WaterBlade

- Dries your vehicle in one-third of the time
- Soft silicone blade will not scratch painted surfaces
- Flexible blade molds to the shape of the surface
- 15 times less friction than terrycloth & microfiber towels
- Hundreds of uses around home and shop



Microfiber Applicator & Cloths

- A. Microfiber Applicator Pad
- B. Super White Microfiber Cleaning Cloth
- C. Microfiber Finishing Cloth & Quick Detailer
- D. Microfiber Waffle Weave Drying Towel



Wash Mitt

- Easily lifts and traps grime
- Heavy-duty, long-wearing Lorene synthetic fibers
- Resists heat, gasoline and detergents
- Safe for all paint finishes

WeatherTech® BatteryCharger

- Made for long term maintenance of your vehicle's battery
- Monitors battery condition with 4-step charging method
- Perfect for collector cars, seasonal vehicles or special vehicles



Permanent
Connectors
(included)

Temporary
Connectors
(included)



Indoor Custom-Fit Car Cover

- Long-lasting fabric memory
- Form-Fit® around vehicle's contours
- Breathable to prevent vapors/moisture trapping
- Soft, plush interior lining
- Sewn in vehicle ID tag on front of cover, easily find the correct cover
- Designed for indoor use only
- Available in 6 colors
- 2 storage bags included

Colors

Dark Blue, Black, Bright Red, Charcoal Grey, Silver Grey and Hunter Green



Outdoor Custom-Fit Car Cover

- High performance, long-lasting material
- UV resistant, withstands harshest sun climates
- Water resistant
- Designed for outdoor use
- Available in 3 colors
- Front labeled for easy install
- Sewn in vehicle ID tag in front of cover, easily find the correct cover
- 2 storage bags included

Colors

Pacific Blue, Cadet Grey and Toast



Packaging

A	TEHCARE® FLOORLINER CLEANER AND PROTECTOR KIT
B	WEATHERTECH® BATTERYCHARGER
C	READY-TO-WASH™ BUCKET SYSTEM
D	TEHCARE® WATERBLADE
E	TEHCARE® WASH MITT
F	SOAKER™





WeatherTech®
Ready-to-Wash™
system

1 Mackell Court • Bolingbrook

780-0300

C

F

E

OutdoorMat™



Colors

Black, Tan, Grey
and Brown



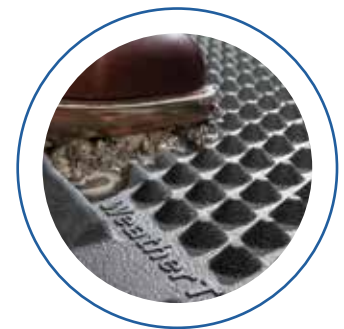


Perfect for Any Doorway!

- Made in USA from a 100% recyclable resin
- Specially designed scraper edge and scraper cones to remove debris
- Robust design lays-flat and stays-put
- Perimeter vents to allow drainage

Available in 3 Sizes and 4 Different Colors

24" X 39" 30" X 48" 30" X 60"



Scraper
Cones



Colors

Black, Tan, Grey
and Brown





Keeping Your Floor Clean!

- Raised lip to contain fluid, dirt, and debris
- Quick and easy to clean
- Robust design, lays-flat and stays-put
- Comfortable cushioning for feet

Available in 3 Sizes and 4 Different Colors

24" X 39" **30" X 48"** **30" X 60"**



**Non-Slip
Design**



Keeps Mud Away!

- Easily holds 4 large pairs of boots/shoes
- Made of strong, yet flexible, TPE for durability
- Water is channeled away from boots/shoes to keep them dry
- Contains mud, snow, water and dirt to protect your floors
- Available in 4 different colors

Colors
 Black, Tan, Grey and Brown

Size: 16" X 36"



Measures 34¼" Wide by 22½" Deep, Fits a Standard 36" Wide Cabinet

Under the Sink Protection Mat!

- Fits a standard 36" sink base kitchen cabinet
- Custom trim-features allow for smaller cabinets (width or depth)
- Custom trim-features accommodate plumbing that comes up through the bottom of the cabinet
- Easy to clean - just wipe away messes
- Holds up to one gallon of fluids

Colors

Black or Tan



Smaller Cabinets Width Can Be Trimmed Down to 30¼" or 28" and Depth Can Be Trimmed Down to 20¼"





Easy to Clean and Dishwasher Safe!

- Raised lip design that traps fluids
- Anti-slip finish
- Custom pattern that prevents glasses from sticking to the coaster
- Easy to clean and dishwasher safe - top rack only



Five Different Sizes
4", 6", 8",
10" and 12"
(diameter)



Colors

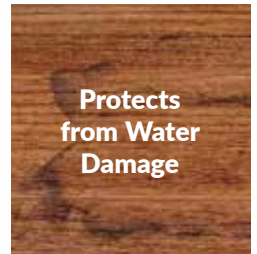
Black, Tan, Grey
and Terracotta





Holds Water and Debris!

- Heavy-duty quality mat
- Holds up to ONE gallon of liquid
- Robust design lays-flat
- Quick and easy to clean
- Protect your floors from scratches and water damage



Colors

Dark Green, Cocoa and Terracotta





Easily Assembled by Hand!

Available in 2 tile styles, 2 tile sizes, and 5 border components to allow fast wall-to-wall installation without the need to cut or trim.

Easily assembled and disassembled by hand using a snap together loop & tab system. No professional installation or special tools required!

Tiles are available in a variety of colors, borders available only in black. Use a single color or create custom patterns by using multiple color and border options.

Multi-Use

Designed to withstand the daily wear and tear of virtually any floor:

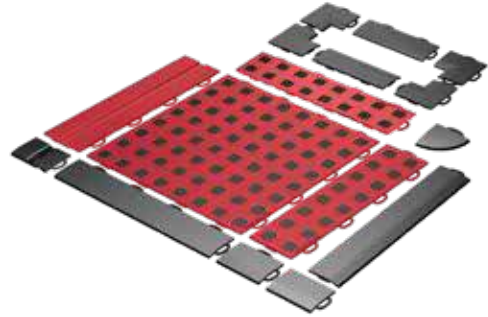
- Garage • Laundry Room • Shop • Basement • Mud Room
- Workout Room • Play Area • Trade Show Flooring

Tiles Available in
a Variety of Colors,
Borders Available
Only in Black



TechFloor™ Tile System Components

Floor Tiles	Expansion Tiles	Beveled Edges	Beveled Edge Corners
12" x 12"	3" x 12" Expansion Joint	2" x 3" with Tabs	Inside Tab-Tab
3" x 12" Left Loop	2" x 3" Beveled Edge Expansion Joint	2" x 6" with Tabs	Inside Tab-Loop
3" x 12" Right Loop		2" x 12" with Tabs	Inside Loop-Loop
		2" x 3" with Loops	Inside Loop-Tab
		2" x 6" with Loops	2" x 2" Border Corner
		2" x 12" with Loops	



Premium with TractionSquares™

The first modular floor tiles to offer two distinctly different materials molded into one tile. Our revolutionary manufacturing process offers an extremely rugged and low profile polypropylene plastic tile with non-slip thermoplastic elastomer TractionSquares™. A soft touch underside offers incredible grip to virtually any floor.



Solid with Raised Squares

A solid polypropylene tile that features raised squares for traction and style. Combine with Premium with TractionSquares™ for unlimited styling options.

Packaging



A	CHRISTMAS TREE MAT
B	INDOORMAT™
C	OUTDOORMAT™
D	TECHFLOOR™
E	BOOTTRAY™
F	SINKMAT™





Single Low



Single High



Double Low



Double High





Non-Toxic Pet Feeding System

- NSF Certified, US sourced Stainless Steel Bowl(s)
- Stand made from an FDA approved plastic
- Patent-pending bowl design for comfortable mealtime
- Available in a variety of colors, heights, and sizes
- Options for single or double bowls

Colors

Available in a variety of colors and sizes



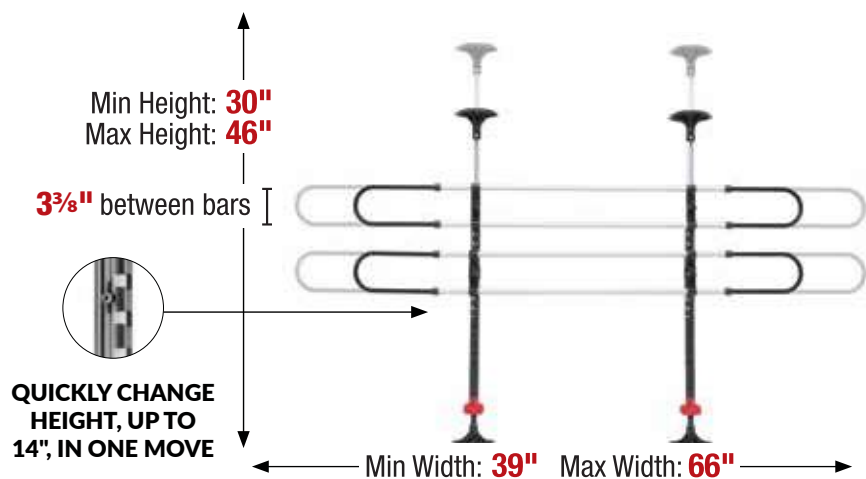
Pet Barrier

Installs in Minutes

- 100% Made in the USA - even the bolts and screws!
- Easily installed and quickly adjusted
- No tools needed for installation
- Horizontal aluminum bars contain adjustable slides
- Soft feet protect your interior and minimize rattling



Additional
Extension Kit and
Fencing Pieces
Available





Pet Barrier Storage Bag
(sold separately)



Pet Barrier Packaging

PetRamp

High Traction Foldable Pet Ramp

- Portable, heavy-duty PetRamp for elevated vehicles
- Non-slip surface for added traction
- Lightweight - only 16 lbs.
- Rubber feet prevent the ramp from sliding on both ends
- Custom designed hinge provides strength and security
- Carrying handles let you take the PetRamp anywhere needed



Specifications:

- PetRamp measures 67 inches unfolded, 33.5 inches folded and 15 inches wide
- PetRamp weighs only 16 lbs. and supports up to 200 lbs.



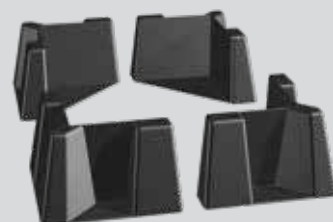
Lightweight,
Easy to Operate





Cargo Containment System

- Made from a durable plastic with a super-grippy underside
- Works with WeatherTech® Cargo Liners, existing vehicle carpet or flooring
- Unlimited uses



Set of Four



CargoTech® Packaging

Expand your Cargo Area by 13 Cubic Feet

- An additional 13 cubic feet for excess cargo
- Heavy-Duty, weather-resistant 1000 Denier Nylon with PVC inner coating,
- Measures 39" x 32" x 18"
- Swivel straps that mount to the crossbar or side rails of an existing roof rack
- Patented Roll-and-Wrap™ tabs to prevent straps from flapping in the wind
- Soft, felt bottom to protect your vehicle's roof finish from scratching



RackSack® Packaging





Cup Holder Protection

- Fits the bottom of virtually all factory vehicle cup holders
- Removable, washable and dishwasher safe
- 4 Coasters per pack, two measure 3 7/16" the other two measure 3 1/2" in diameter, with 5/8" high flared sidewalls
- Deep cup shape with added sidewall protection catches and holds spills, condensation, crumbs and other messes!
- Eliminates rattling





Universal Portable Mobile Phone Holder

- Fits into any automotive cup holder
- Supports a wide range of mobile devices



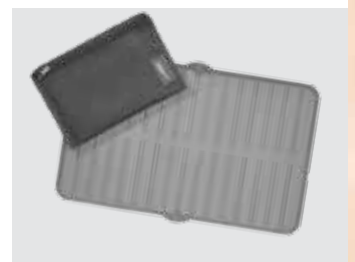
CupFone™
Packaging





Easy Solution

- Unfolds in just seconds for convenience in any situation
- Made from antimicrobial silicone to help prevent unwanted bacteria, mold and mildew
- Storage case safely secures the PurseTray™ until next use or cleaning
- Easy to clean, PurseTray™ is dishwasher safe and it's case is washing machine friendly
- PurseTray™ and sealable storage case are 100% Made in the USA



Multiple Uses

**Size: 8" x 13"
with ½" tall sides**



StarBelt® Packaging

StarBelt® Collection Clothing Belts

StarBelt® is a trendy yet practical belt that comes in 14 different colors that matches any outfit, activity or mood! It is one size fits most and you trim it to fit your size, making it perfect for girls, guys and kids of all ages.

StarBelt® is made in U.S.A of a durable and waterproof material.



Gift Bag

Make the perfect gift even better with this worry-free wrapping, a gift bag exclusively made to fit around the WeatherTech® FloorLiner™ boxes.

Made from high quality materials, it is reusable for unlimited other uses. Available in red and black.

Let's Move the
WeatherTech® Brand
 Forward Together



PART#
9PDTBC1



PART#
99950-AVM

PART#
94100S



PART#
99981 W/ADD-ON
9PDFLSHLF1



9PDIOM1

Learn more about truck bed accessories we have.